

Production of Stressless® and Ekornes® Collection

J.E. Ekornes AS, dep Ikornnes



- Production of Stressless® chair and components for all factories.
- No. of employees: 731
- Production area: Appr. 60 000 sq.m, most of the buildings are built or renewed during last 10 years.
- Component production and internal transportation highly automatised

J.E. Ekornes AS, dep Vestlandske



- Production of Stressless® sofa
- No. of employees: 171
- Production area: Appr. 10 000 sq.m
- Internal transportation highly automatised

J.E. Ekornes AS, dep Tynes



- Specialized factory for production of components of laminated wood
- No. of employees: 55
- Production area: Appr. 9 600 sq.m, most of the buildings are built or renewed during last 3 years.
- Automation of production started, but still more potential

J.E. Ekornes AS, dep Grodås



- Specialized factory for production of components of solid wood
- No. of employees: 100
- Production area: Appr. 7 500 sq.m
- High degree of automation of production processes

J.E. Ekornes AS, dep Hareid



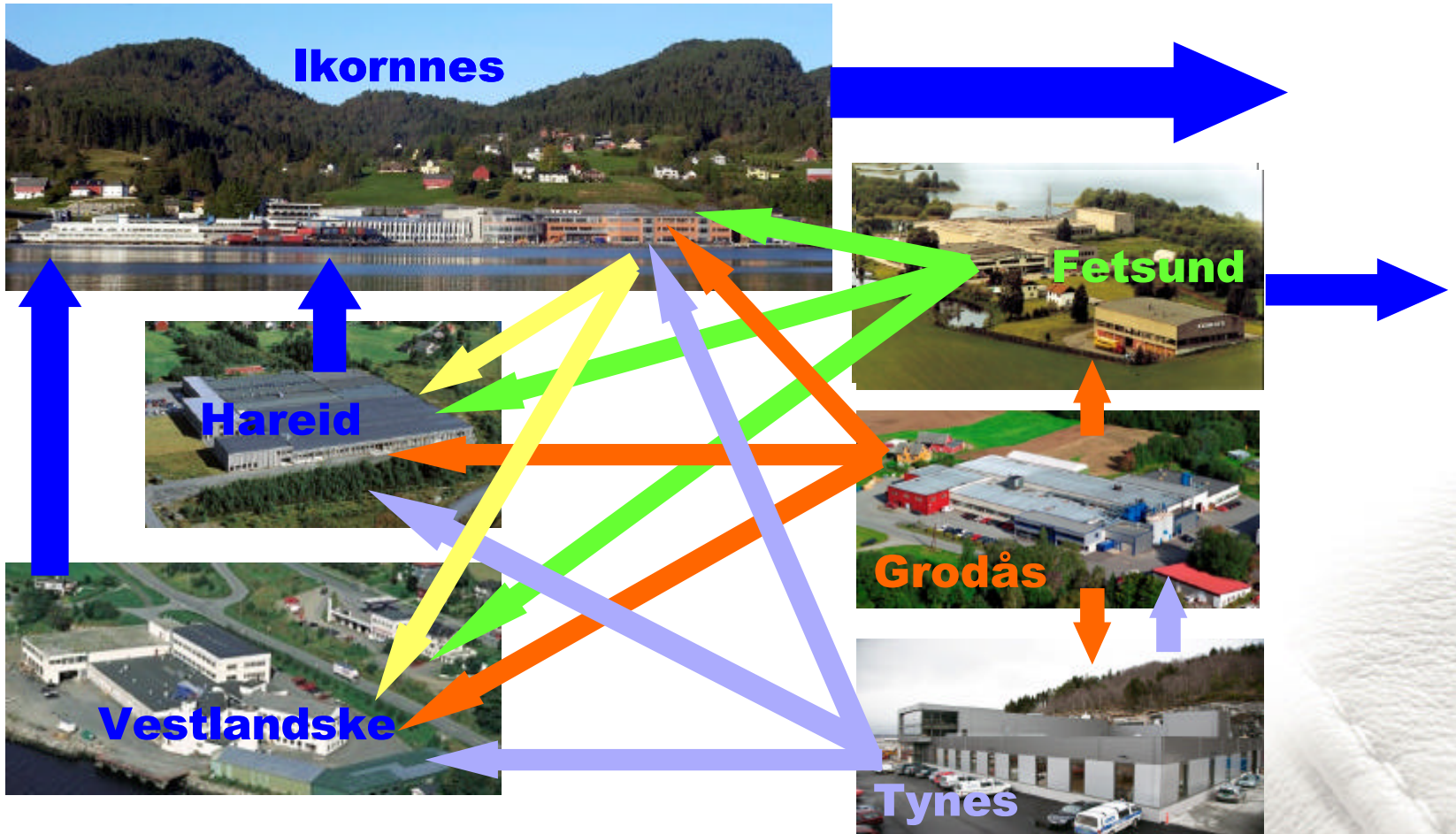
- Production of Stressless® sofa and sofa with fixed back
- No. of employees: 100
- Production area: Appr. 13 000 sq.m
- Internal transportation highly automatised

Flow

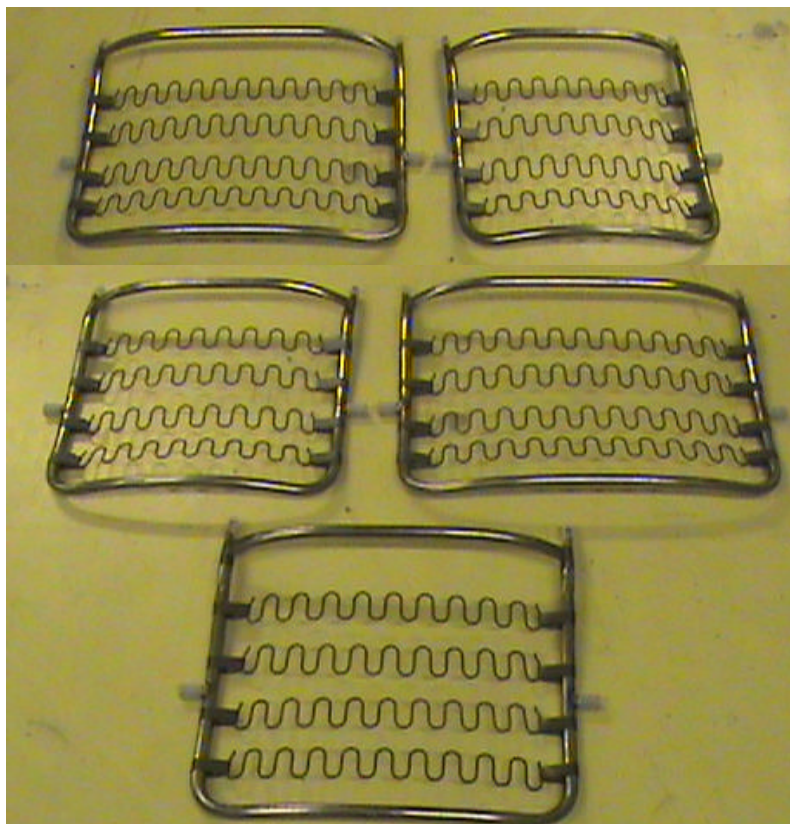
Components:



Finished goods:



Standardisation



- 5 steel seat frames cover the entire Stressless® collection.

Standardisation

- Different designs, based on common components



Consul

Sunrise Medium

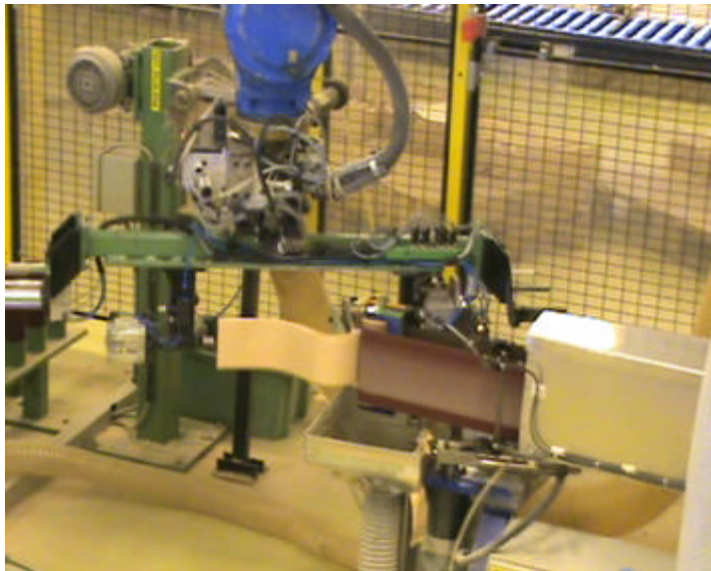


Orion

Jazz Medium

Automation

Brushing of legs for Stressless® chair

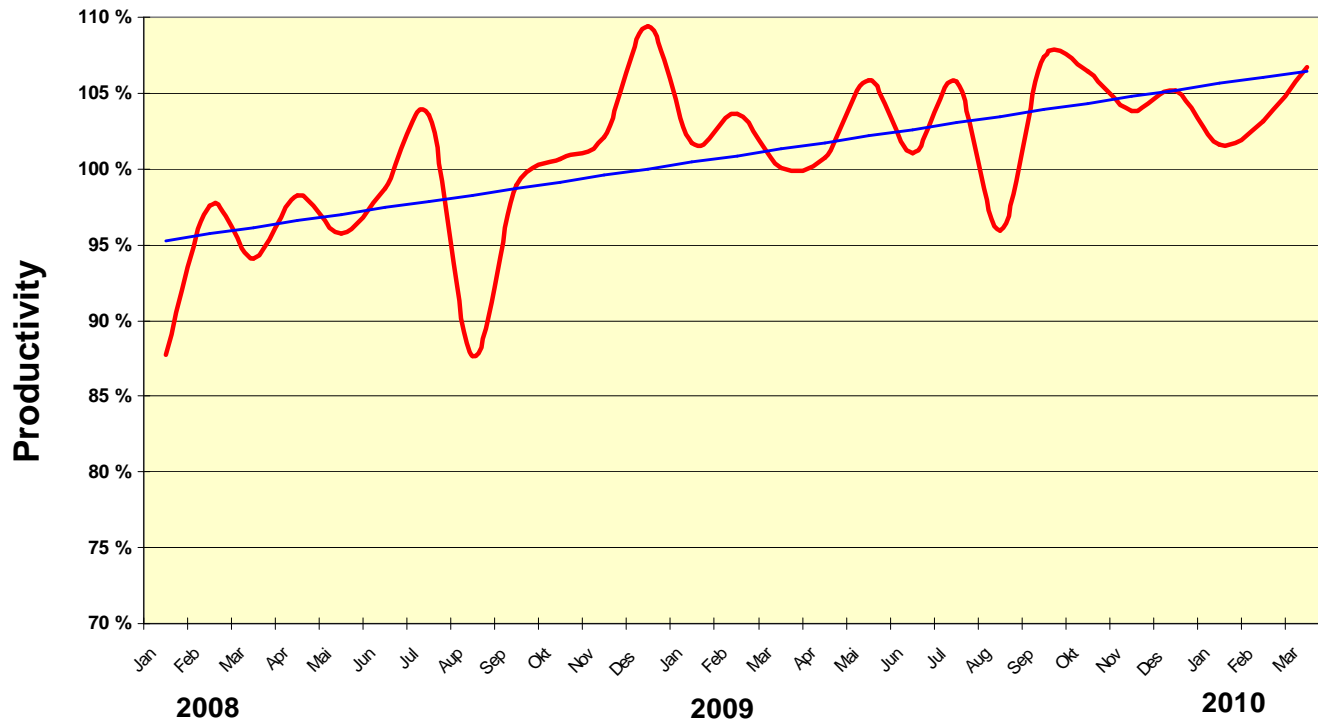


Conveyor, transporting moulded foam to storage



Productivity

- Focus on productivity: Monitoring and reporting periodically
- Wage system with focus on efficiency



Stressless® 1998 – 2010 Q1

